



Detoxification with Homotoxicology

By Dr. Shlomi Gavish DOM,AP



Restore Balance • Eliminate Toxins • Rebuild Your Health

Advanced detox protocols designed to support
your body's natural healing systems.



Introduction



We live in a world surrounded by toxins. Each year, thousands of new chemicals are introduced into our environment, many of which are not fully tested for their long-term effects on the human body.



Some toxins, known as Persistent Bioaccumulative Toxins (PBTs), remain in the environment and food chain for extended periods. These include substances such as DDT, PCBs, dioxins, and plasticizers.



Over time, exposure to these toxins can disrupt normal biological functions, affecting the immune system, hormones, and overall health.



In addition, the body produces internal toxins as part of normal metabolism. When these are not properly eliminated, they can accumulate and contribute to chronic health conditions.



TOXICITY IS A MAJOR PROBLEM



In 2001 alone, more than **6 billion pounds** of chemical pollutants were released into the environment.



Over a lifetime, we are exposed to **thousands of foreign compounds** that can enter our bodies through the food we eat, the air we breathe, and directly through our skin.



Many of us consume **poor-quality foods** that lack essential nutrients, reducing the body's natural ability to detoxify.



All of these factors can contribute to the **accumulation of toxins**, overwhelming the body's detox systems and impacting overall health.



DETOX WITH HOMOTOXICOLOGY



Homotoxicology is an integrative medical approach that combines the therapeutic principles of homeopathy with the diagnostic precision of conventional medicine.



Developed over 50 years ago in Germany, this system focuses on identifying and eliminating accumulated toxins that contribute to dysfunction and disease.



Today, homotoxicology is practiced worldwide and recognized for its holistic, individualized approach to restoring balance and supporting the body's natural healing processes.



Dr. Gavish specializes in homotoxicology and provides personalized care using safe, effective homeopathic remedies to support detoxification and long-term wellness.



WHAT IS HOMOTOXICOLOGY?



Homotoxicology is a comprehensive, integrative approach that supports the body's ability to **detoxify, regulate, and restore natural balance.**



It is based on the principle that illness develops when toxins from external sources or internal metabolic processes accumulate and disrupt normal biological functions.



Through the use of targeted homeopathic remedies and adjunctive therapies, homotoxicology stimulates the body's innate **self-healing mechanisms**, strengthens vital functions, and promotes long-term wellness.



This patient-centered approach addresses the **root causes** of illness, not just the symptoms—supporting the body, mind, and emotional well-being as a whole.



WHAT ARE HOMEOPATHIC REMEDIES? WHAT IS HOMEOPATHY?



Homeotoxicology uses homeopathic remedies to support the body's natural **detoxification processes**. Homeopathic remedies, which are FDA registered, are available in tablets, liquid vials, oral drops, and injection solutions. They are taken orally, applied topically, administered through inhalation, or given by injection.



These remedies work synergistically to stimulate the body's inherent capacity to heal itself. Most are derived from **natural substances** sourced from plants, minerals, or animals.



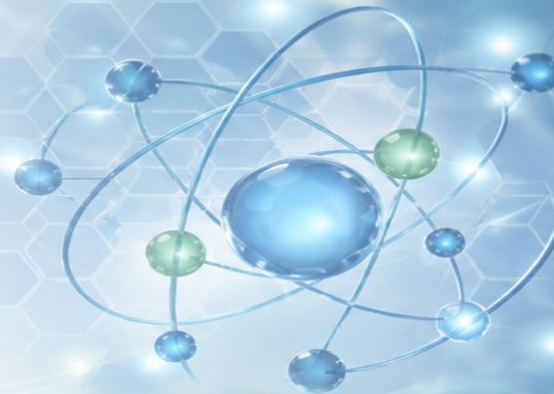
The term homeopathy comes from the Greek words **homeo**, meaning similar, and **pathos**, meaning suffering or disease.



Homeopathy is an alternative system of medicine that was founded in Germany during the 18th century by Dr. Samuel Hahnemann. It is based on the principle of "like cures like" and uses highly diluted substances to gently stimulate the body's vital response and **restore balance**.



By addressing the **root causes** of imbalance rather than just suppressing symptoms, homeopathy aims to strengthen the body's defenses and promote long-term health and well-being.



WHAT ARE TOXINS? HOW DO TOXINS IMPACT HEALTH?



The environment we live in exposes us to **thousands of chemicals** every day. Many of these are toxic to the body. Sources of toxins include air pollution, synthetic chemicals in food and water, bacteria, viruses, and allopathic drugs, as well as chemicals absorbed through the skin.



Toxins **enter the body** through the skin, lungs, and digestive tract, and are processed by vital organs such as the liver, kidneys, and gastrointestinal system. While the body is designed to neutralize and eliminate harmful substances, endogenous toxins can also form internally as byproducts of metabolism.



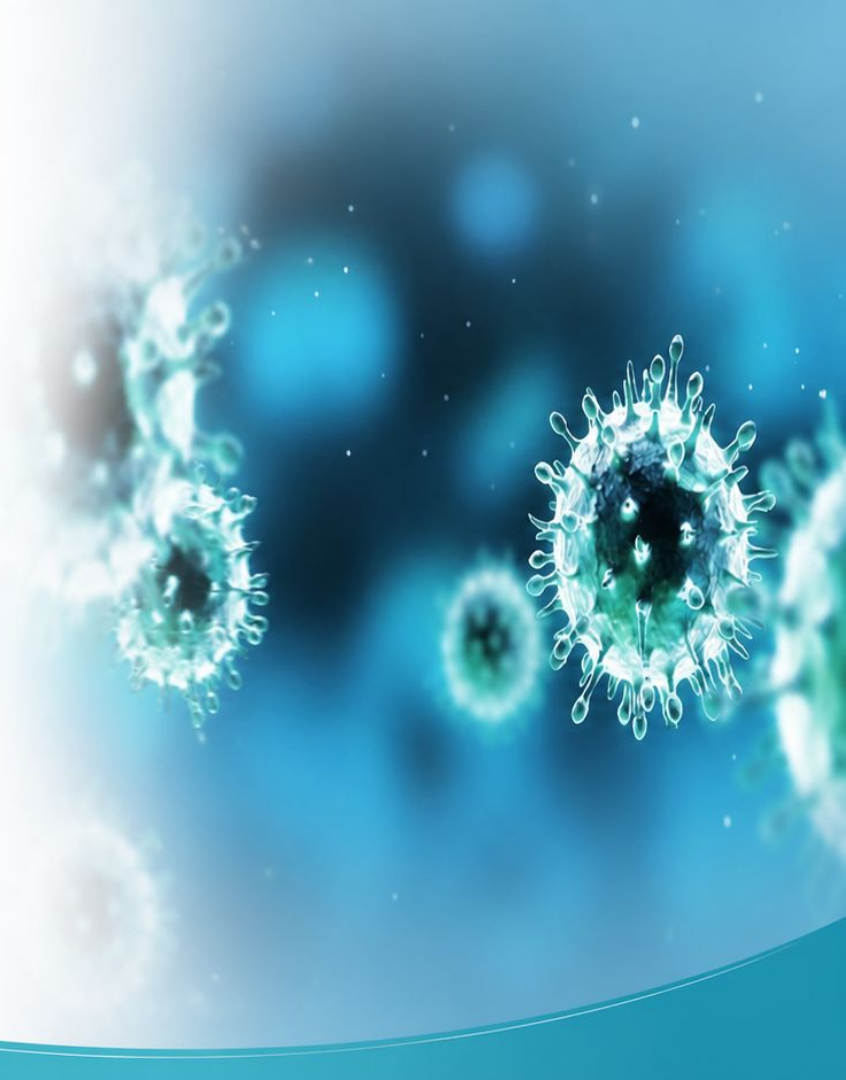
Endogenous toxins may arise from lactic acid buildup, stress hormones (adrenaline, histamine), immune responses, nutrient deficiencies, or emotional and psychological stress.



When the body's natural detoxification pathways become **overloaded**, **toxins accumulate** and interfere with the proper function of cells, tissues, organs, hormones, and the immune system.



Homotoxicology recognizes that disease is the **body's response to this toxic burden**. It reflects the body's intelligent attempt to protect itself—either by eliminating, neutralizing, or isolating toxins when complete elimination is not possible.



WHAT ARE THE PHASES OF DISEASE DEVELOPMENT?

Disease progression is a dynamic process that unfolds in six distinct phases. Over time, as toxins accumulate in the body, the related physical imbalances become increasingly severe and complex. Homotoxicology aims to identify and address these underlying imbalances, helping to **restore the body's natural ability to heal**. Common signs and symptoms associated with each phase are outlined below.



1. EXCRETION PHASE

The body eliminates toxins efficiently. Organs and systems function optimally, and the individual is in a state of balance and vitality.



2. REACTION PHASE

Detoxification pathways become overburdened. The body reacts to the increased toxic load, and early functional imbalances may appear.



3. DEPOSITION PHASE

Toxins and metabolic byproducts accumulate in tissues. The body begins to compensate, and subtle structural changes may occur.



4. IMPREGNATION PHASE

Toxins become further embedded in tissues and cells. Compensatory mechanisms weaken, and more pronounced symptoms may develop.



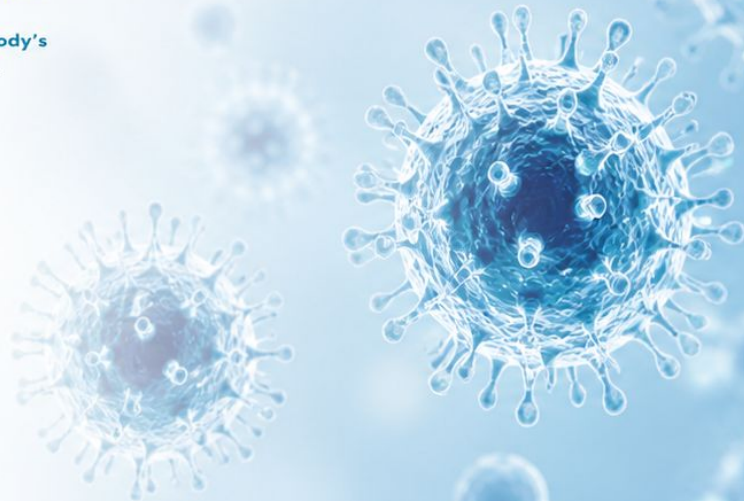
5. DEGENERATION PHASE

Cellular function declines and organ systems become compromised. Chronic symptoms and progressive imbalance are evident.



6. NECROSIS PHASE

Advanced and severe dysfunction occurs. The body's ability to compensate is overwhelmed, and serious degenerative changes may arise.



THE SIX-PHASE TABLE - DETOXIFICATION AND APPLICATION OF THERAPY

	HUMORAL PHASES			MATRIX PHASES			CELLULAR PHASES		
Organ system	Excretion Phases	Inflammation Phases	Deposition Phases	BIOLOGICAL DIVISION	Impregnation Phases	Degeneration Phases	Dedifferentiation Phases		
Tissue Damage	No enzyme damages; Excretion Principle; Natural Healing Tendency				Enzyme damage; Compensation principle; Chronic Diseases				
Treat with:	Lymphomyosot	Lymphomyosot	Lymphomyosot, Galium-Heel		Galium -Heel, Pulsatilla, compositum Coenzyme compositum	Thyreidea compositum, Ubichinon compositum, Glyoxal compositum	Thyreidea compositum, Glyoxal compositum		
Skin	Episodes of sweating	Acne	Naevi		Allergy	Scleroderma	Melanoma		
Nervous System	Difficulty concentrating	Meningitis	Cerebrosclerosis		Migraine	Alzheimer's disease	Gliosarcoma		
Sensory System	Tears, otorrhea	Conjunctivitis, otitis media	Chalazion, cholesteatoma		Iridocyclitis, tinnitus	Macular degeneration, anosmia	Amaurosis, malignant tumor		
Locomotor System	Joint pain	Epicondylitis	Exostosis		Chronic rheumatoid arthritis	Spondylosis, Osteoarthritis	Osteosarcoma, chondroma		
	Myalgia	Acute Sprain	Myogelosis		Fibromyalgia	Muscular Dystrophy	Myosarcoma		
Respiratory Tract	Cough, expectoration	Bronchitis, acute	Silicosis, smoker's lung		Chronic (obstructive) bronchitis	Bronchiectasia, emphysema	Bronchial carcinoma		
Cardiovascular System	Functional heart complaint	Endocarditis, pericarditis, myocarditis	Polycythaemia, Coronary heart disease		Heart failure	Myocardial infarction	Endothelioma		
Gastrointestinal System	Heartburn	Gastroenteritis, gastritis	Hyperplastic gastritis	Chronic gastritis, malabsorption	Atrophic gastritis, liver cirrhosis	Stomach cancer, colon cancer			
Urogenital System	Polyuria	Urinary tract infection	Bladder stones, kidney stones	Chronic urinary tract infection	Renal atrophy	Cancer			
Blood	Reticulocytosis	Leucocytosis, suppuration	thrombocytosis	Aggregation disturbance	Anemia, thrombocytopenia	Leukemia			
Lymph System	Lymphedema	Lymphangitis, tonsillitis, lymphadenitis	Lymphnode swelling	Insufficiency of the lymph system	Fibrosis	Lymphoma, Hodgkin / non-Hodgkin-lymphoma			
Metabolism	Electrolyte shift	Lipid metabolism disturbance	Gout, obesity	Metabolic Syndrome	Diabetes mellitus	Slow reactions			
Hormone System	Globus sensation	Thyroiditis	Goiter, adenoma	Hyperthyroidism, glucose intolerance	Menopausal symptoms	Thyroid cancer			
Immune System	Susceptibility to infection	Weak immune system, acute infection	Weak reactions	Autoimmune disease, immunodeficiency, chronic infections	AIDS	Slow reactions			

The six-phase table is a field matrix reflecting medical experience based on careful observation and empirical learning. It is a phase-by-phase arrangement of disorders with no direct relationship between them.

No casual pathogenetic link between disorders can be inferred.

The structure of the table makes it suitable for developing a prediction system giving a better assessment of the possibilities for a vicatration effect.

HUMORAL PHASES:



I. Excretion Phase = Expulsion of Toxic Products

Intense sweating, difficulty concentrating, tears, joint pains, myalgia, coughing, sneezing, heartburn, diarrhea, polyuria, reticulocytosis, lymphedema, electrolyte shift, susceptibility to infection



II. Inflammation = Turbo-Cleansing by the Activated Defense System

Acne, meningitis, conjunctivitis, sinusitis, pharyngitis, epicondylitis, acute sprain, acute bronchitis, gastroenteritis, urinary tract infection, leucocytosis, lymphangitis, lipid metabolism disturbance, thyroiditis, acute infections, weak immune system

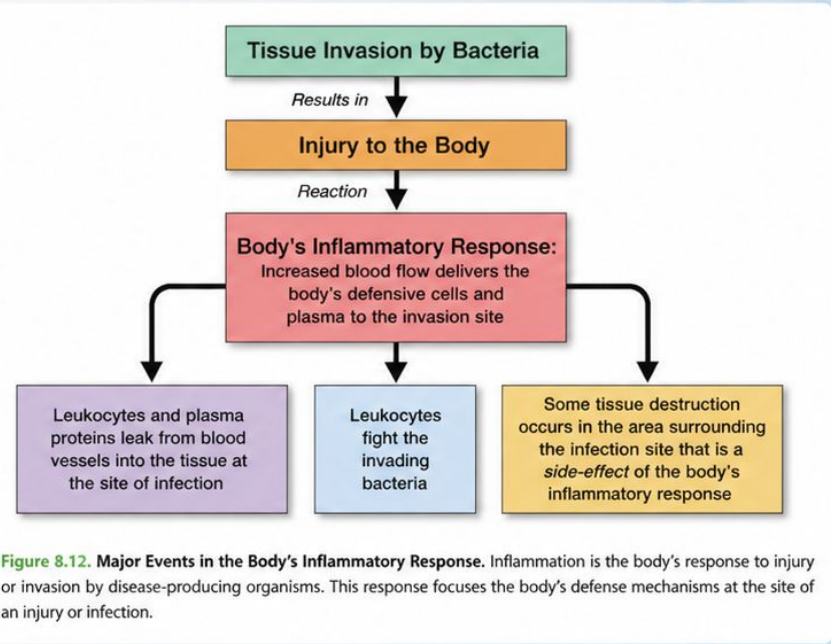


Figure 8.12. Major Events in the Body's Inflammatory Response. Inflammation is the body's response to injury or invasion by disease-producing organisms. This response focuses the body's defense mechanisms at the site of an injury or infection.

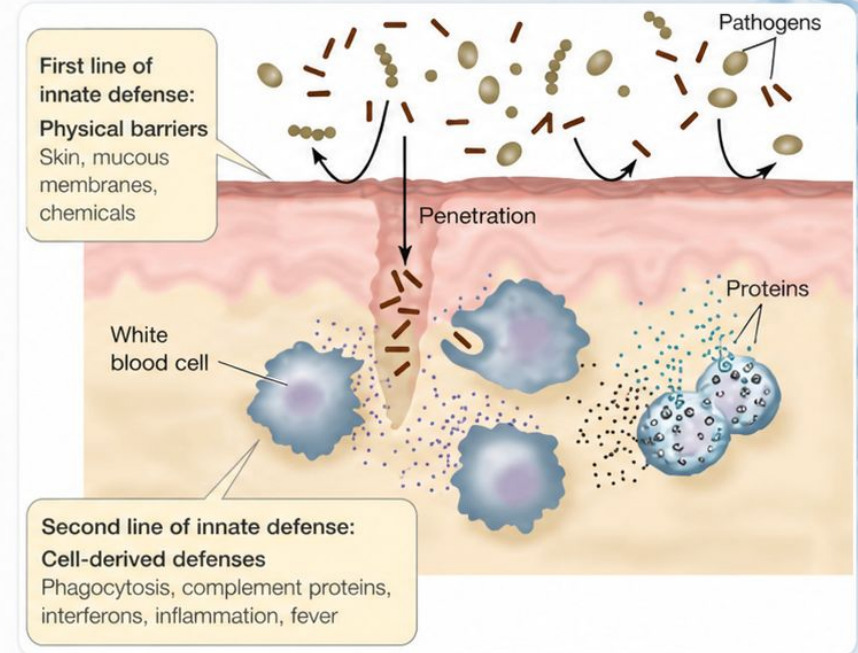
MATRIX PHASES:

III. Deposition = Storage of Toxins in the Extracellular Space

Nevi, chalazion, exostosis, myogelosis, nasal polyps, silicosis, arteriosclerosis, intestinal polyps, gallbladder or kidney stones, polycythaemia, lymph-node swelling, gout, obesity, goiter

IV. Impregnation = Invasion of Toxins into the Cell

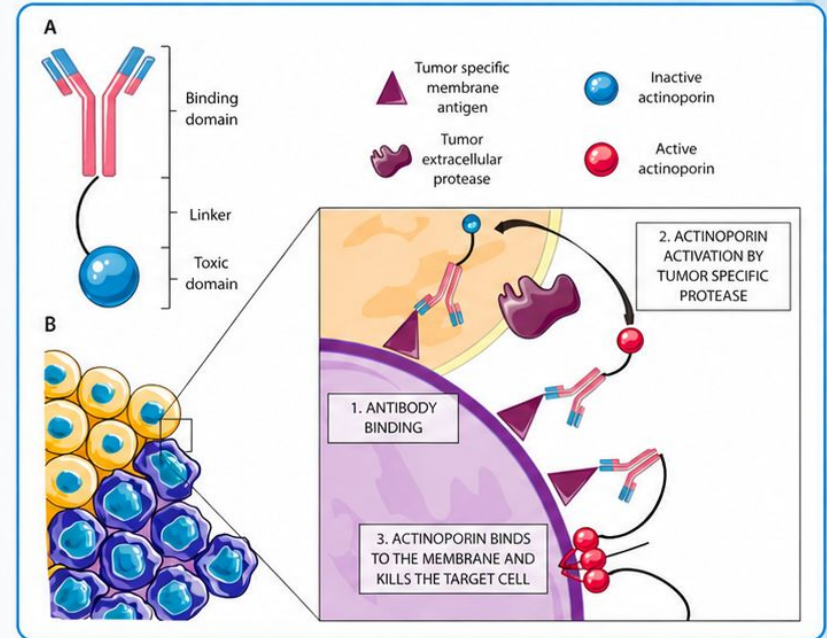
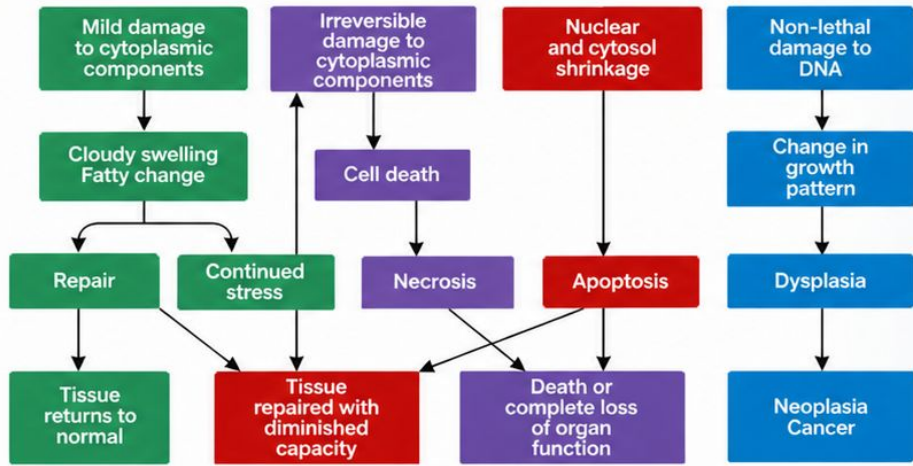
Allergies, asthma, rosacea, migraines, rheumatoid arthritis, fibromyalgia, chronic fatigue syndrome, chronic bronchitis, hypertension, coronary heart disease, chronic gastritis, chronic urinary tract infection, insufficiency of the lymph system, metabolic syndrome, adrenal exhaustion, dyslipidemia, menopausal symptoms, recurrent vaginitis, hyperthyroidism, glucose intolerance, chronic infections, autoimmune disease



CELLULAR PHASES:

V. Degeneration = Destruction of the Cell by the Toxins

Scleroderma, Alzheimer's disease, macular degeneration, spondylosis, osteoarthritis, bronchiectasis, chronic obstructive pulmonary disease, congestive heart failure, atrophic gastritis, renal atrophy, anemia, fibrosis, diabetes



VI. DEDIFFERENTIATION = NEOPLASTIC CHANGES IN THE CELL

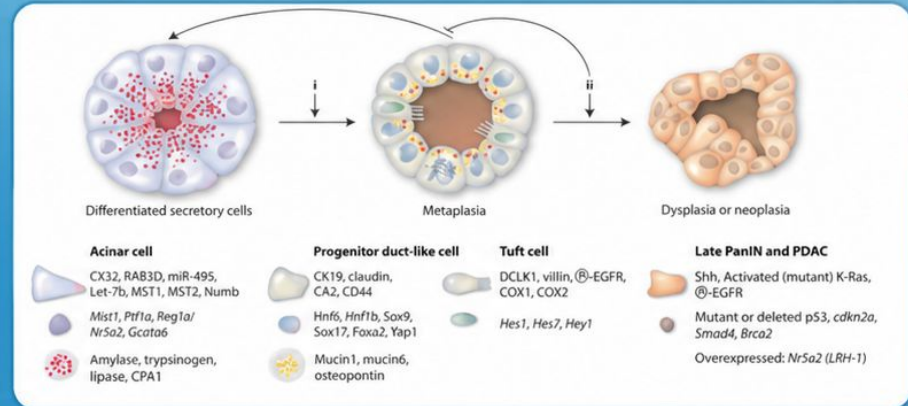
Tumors, cancer

The Excretion and Inflammation Phases (I & II) are part of the **Humeral Phase**. The defense system is intact during this phase and can excrete the toxins through various pathways. Intracellular systems are not disturbed.

The Deposition and Impregnation Phases (III & IV) occur in the **Matrix Phase**, which involves toxins in the extracellular matrix or connective tissue for the first time. The structural components of the connective tissue are altered. In addition, during the Impregnation Phase (IV), the biology of cells in the body begins to change.

The Degeneration and Dedifferentiation Phases (V & VI) take place in the **Cellular Phase** when cell systems are increasingly destroyed and there is loss of function in the connective tissue.

The defense system cannot excrete toxins from the body. Under Number 4 topic you put link for the Six Phase table Detoxiication



WHAT CONDITIONS ARE TREATED WITH HOMOTOXICOLOGY? WHAT IS INVOLVED IN HOMOTOXICOLOGY TREATMENT?

- ✓ All of the conditions listed under the phases of disease development can be treated with homotoxicology. It is used as an **adjunct to—not a substitute for—standard medical care**. This is especially important in the more advanced stages of degeneration and dedifferentiation, where integration with conventional medical care is essential.
- ✓ Homotoxicology practitioners assess the extent to which toxins have penetrated the individual and develop treatment plans based on the complexity and chronicity of the condition. Acute symptoms are treated first, followed by the underlying chronic imbalance. Healing typically occurs in **reverse chronological order**—from the most vital organs to those of lesser importance relative to the underlying disorder.
- ✓ Many conditions treated with homotoxicology require a combination of therapies. Treatment generally begins with **detoxification and connective tissue activation** for six weeks, followed by a **twelve-week drainage phase**. This is followed by a combination of remedies tailored to the disease phase and the dominant organ systems involved. As the body clears and regulation begins, remedies are often adjusted as needed. Since each individual is unique, treatment plans are personalized.
- ✓ In general, most conditions will require **12 to 18 weeks of consistent remedy use**. For more severe or chronic conditions, the time of active remedy use may extend up to a year.
- ✓ As toxins are eliminated from the body, symptoms may initially intensify or reflect past symptoms before improvement is observed. This is a **normal part of the detoxification and healing process**. If symptoms are severe, remedies may be adjusted to support patient comfort and optimize the healing response. It is important to communicate any changes to your practitioner.
- ✓ Homotoxicology is a **gradual, layered process** that addresses the root causes of imbalance. While it may progress more gradually than conventional treatments, its goal is to support long-term healing and overall resilience. All homotoxicology treatments are **compatible with standard medical care**. There are no known drug interactions.

HOW CAN THE BENEFITS OF HOMOTOXICOLOGY BE MAXIMIZED?

Homotoxicology is often combined with conventional medical treatment. In many cases, a complementary approach with homotoxicology can deliver superior health outcomes by **addressing underlying imbalances**, **optimizing** the body's natural defense systems, and **supporting** the optimal functioning of tissues and organs.

Dr. Gavish effectively **integrates** homotoxicology with Western medicine, acupuncture, and herbal therapy. Acupuncture is most effective when the body's channels and connective tissues are free from significant toxic burden. Acupuncture and herbs also support the body's natural detoxification processes.

For most patients, a combined approach—using homotoxicology, acupuncture, herbs, and Western medicine—provides **greater and more comprehensive benefits** than any of these therapies used alone.



COMMON SYMPTOMS OF A TOXIC BODY

Are you experiencing any of the following symptoms?

- ✓ Difficulty Losing Weight
- ✓ Chronic Fatigue
- ✓ Anxiety and Depression
- ✓ Sleep Disturbances
- ✓ Poor Concentration
- ✓ Muscle Aches and Pains
- ✓ Widespread Joint Pain
- ✓ Headaches
- ✓ Irritability
- ✓ Low Libido
- ✓ Allergies
- ✓ Itchy Skin
- ✓ Poor Digestion
- ✓ Chemical Sensitivities



IF YOU ARE EXPERIENCING THREE OR MORE OF THE ABOVE SYMPTOMS, IT IS TIME TO TAKE ACTION AND HELP YOUR BODY!



Detoxification is about testing, cleansing, and nourishing your body from the inside out.

Removing and eliminating toxins can help you recover from disease, prevent illness, and renew your ability to maintain optimum health. The body has its own natural healing intelligence. Our detoxification protocol stimulates the body's own systems to help cleanse, restore, and revitalize itself.



Our detox protocol works simultaneously to eliminate toxins and stimulate cleansing processes to remove them from your body. Toxins that are released from cells, the extracellular matrix, and the lymphatic system need an exit route. The primary pathways of elimination are the body's excretory organs: the bowel, liver, and kidneys.



A well-cleansed system functions more efficiently as a whole. As your body eliminates toxins and restores balance, your overall wellness improves, and your physiological functions are optimized—leading to a higher quality of life.



TESTING YOUR URINARY pH

The pH of urine reflects how effectively your body maintains acid-alkaline balance. It reveals the alkaline (anabolic) and acid-forming (catabolic) cycles and indicates how organs such as the kidneys, adrenals, lungs, and gonads help regulate pH balance through buffer salts and hormones.

Urine provides a valuable snapshot of your body's overall chemistry. The kidneys filter and eliminate waste along with buffer salts that help regulate pH levels. Urinary pH typically ranges from 4.5 to 9.0, with an optimal range between 6.5 and 7.5. Generally, pH tends to be lower in the morning and higher in the evening, and it can vary throughout the day.

Urinary pH may be influenced by various biochemical factors, including excess minerals, vitamins, metabolic byproducts, and the elimination of medications or toxins.

Digestive enzymes in saliva do not significantly affect urinary pH.

Several factors can influence your urinary pH, including:

- ✓ Diet and the foods you eat
- ✓ Hydration and the amount of water you drink
- ✓ Environmental pollutants and the air you breathe
- ✓ Stress and your daily experiences
- ✓ Preservatives and additives in your food
- ✓ Pathogens and imbalances in your system
- ✓ The quality and amount of rest you receive
- ✓ Ongoing biochemical processes in your body

The Importance of pH Balance in Maintaining Your Health



HOW HAS DR. GAVISH DEVELOPED EXPERTISE IN HOMEOTOXICOLOGY?

Dr. Shlomi Gavish, DOM, AP, HMD, brings **more than 15 years of clinical experience**, combining advanced expertise in homotoxicology with a strong foundation in functional, preventive, and integrative medicine to **optimize patient care**. He has trained with leading global experts in homotoxicology, including specialists from Milano, Italy, as well as Dr. Alejandro Pierra, and continues to stay at the forefront of emerging research and clinical advancements. Dr. Gavish has **successfully treated numerous patients with chronic diseases and complex medical conditions**, utilizing a comprehensive and individualized approach. His treatment protocols integrate homeopathic injectable solutions, Traditional Chinese Medicine, and targeted clinical nutrition. By incorporating detailed patient evaluations and individualized bloodwork analysis, he is able to design **highly customized detoxification therapies** tailored to each patient's specific physiological needs. His approach emphasizes precision, balance, and long-term healing across a **wide range of patient populations**, from **adolescents to geriatric patients**.



More than 15 years
of clinical experience



Trained with world experts
from Milano, Italy,
and Dr. Alejandro Pierra



Successfully treated many
patients with chronic and
complex conditions



Uses homeopathic injectable
solutions combined with
Traditional Chinese Medicine,
clinical diets, and bloodwork



Customized detox therapy
tailored to each patient's
individual needs